

# How maps help fight fire

(Key Stages 2 & 3)



Either using the online **Fire Escape Planner** tool, graph paper or simply a pre-drawn 'generic' house – children should be able to draw an appropriate escape route out of a building, preferably school or their own home.

- One group of children could use the computer to draw a plan of their house or school using the fire escape planner tool at: <http://www.hantsfire.gov.uk/kids/gallery/escapeplanner.html> they can then use the arrow shapes to draw on the escape route and the smoke alarm shapes to place alarms in appropriate places.
- Another group of children could (using a 1metre Trundle wheel) measure the dimensions of the school and classrooms and draw a plan onto graph paper. This could facilitate group discussion on the best ways to leave the building and various classrooms, and also what would make good assembly points.

Further work on the idea of maps and routes could include the following:

- Using a map of the local area, children can draw on various features (the school, their homes) and explain/draw the routes they talk to school. Is there a most popular route.
- Children could conduct a survey to find out how they and their classmates actually get to and from school (car, walk, bike, bus). Encourage them to think the different impacts methods of travel might have on traffic, the environment and their own health.
- On the map, add the nearest fire station and discuss with the children the best route for a fire engine to take to get to the school. Are there any problems it might have getting to the school and onto the school grounds.



## How maps help fight fire

Here's a map of a flat.

Where would you go if there was a fire in:

Bedroom 2?

\_\_\_\_\_

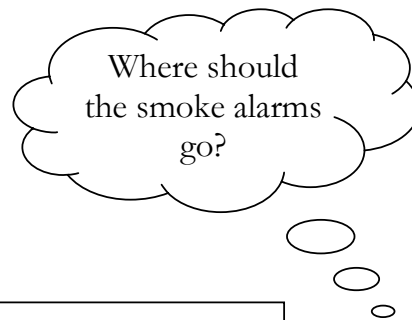
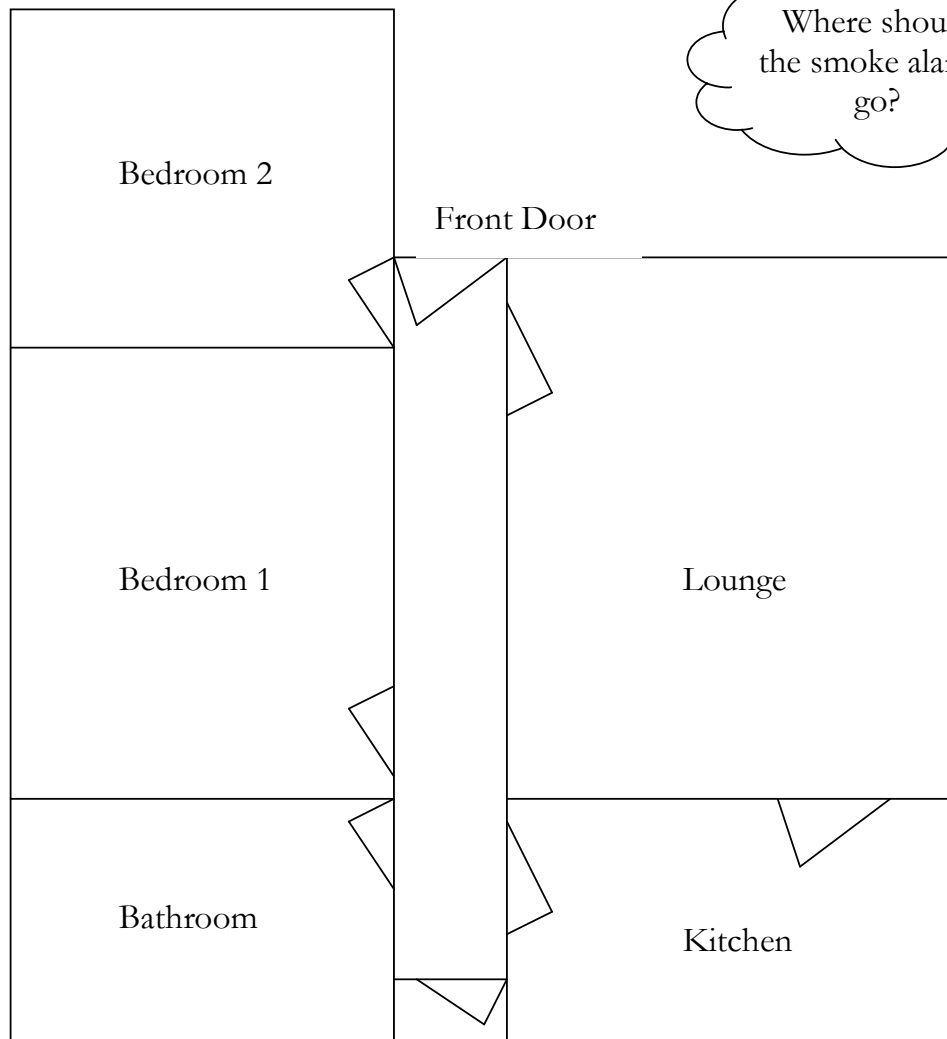
The bathroom?

\_\_\_\_\_

The lounge?

\_\_\_\_\_

The kitchen?



Draw a plan of your own home. Mark the route you would take to get from your bedroom to safety. Mark where your smoke alarms are.